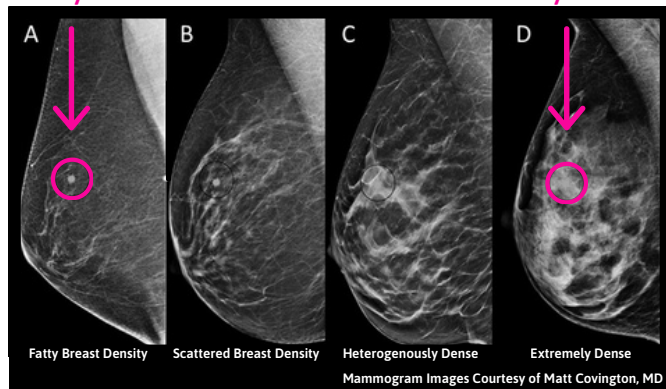


# Why My Density Matters

## Can YOU Find the Cancer?

Now you see it

Now you don't



**Category A** - Fatty Breast Density

**Category B** - Scattered Breast Density

**Category C** - Heterogenously Dense

**Category D** - Extremely Dense

(C and D are considered to be dense)

- Multiple studies show that adding supplemental screening to mammography can find many more cancers in women with dense breasts.
- Ultrasound finds 2-3 more cancers per thousand women with dense breasts, and Molecular Breast Imaging (MBI), Magnetic Resonance Imaging (MRI), or Contrast Enhanced Spectral Mammography (CESM) find more than that. (1)

**Approximately half of all women have dense breasts (Categories C and D). (4)**

A woman with extremely dense breasts is 4-6 times more likely to develop breast cancer than a woman with very little breast density. (2)

**The earlier the stage at breast cancer diagnosis, the greater the chance of survival. (3)**

**!** The more dense the breast, the **HIGHER the RISK** of developing breast cancer.

**!** The more dense the breast, the **HARDER it is TO FIND** cancer on a mammogram

**If you have dense breasts, talk with your doctor about additional breast cancer screening.**

References:

1. Wendie A. Berg, MD, PhD, Elizabeth A. Rafferty, MD, Sarah M. Friedewald, MD, Carrie B. Hruska, PhD, Habib Rahbar, MD. Screening Algorithms in Dense Breasts: AJR Expert Panel Narrative Review. American Journal of Roentgenology. 2021;216: 275-294. 10.2214/AJR.20.24436
2. Boyd NF, Guo H, Martin LJ, et al. Mammographic density and the risk and detection of breast cancer. N Engl J Med. 356(3):227-36, 2007
3. <https://www.cancer.org/cancer/breast-cancer/understanding-a-breast-cancer-diagnosis/breast-cancer-survival-rates.html>
4. Sprague BL, Gangnon RE, Burt V, et al. Prevalence of mammographically dense breasts in the United States. J Natl Cancer Inst 2014; 106:dju255 [PubMed: 25217577]