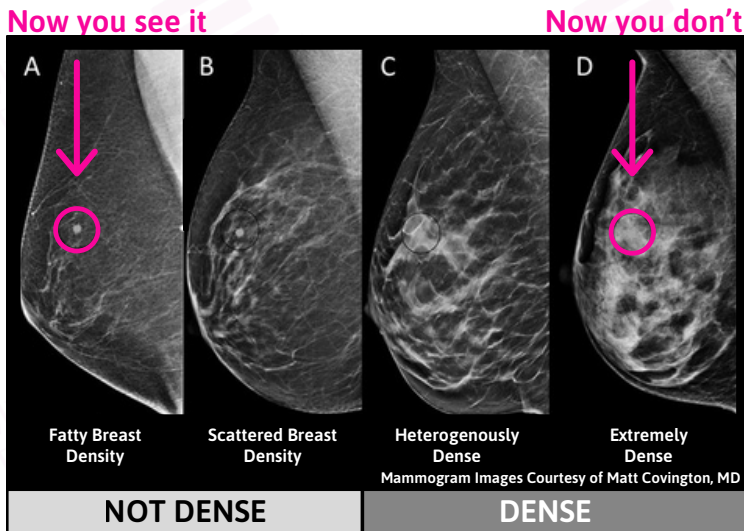


# Why My Density Matters

## Can YOU Find the Cancer?



Dense breast tissue can make it difficult to see cancer on a mammogram.

Women with extremely dense breasts are 4–6x more likely to develop breast cancer.<sup>2</sup>

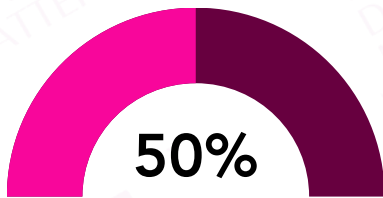
The earlier the stage at breast cancer diagnosis, the greater the chance of survival. (3)

**Category A** - Fatty Breast Density

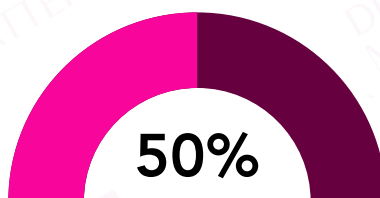
**Category B** - Scattered Breast Density

**Category C** - Heterogenously Dense

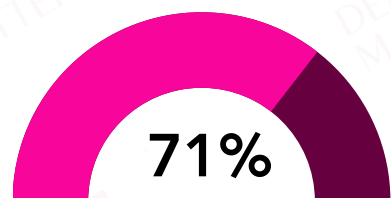
**Category D** - Extremely Dense



Approximately **half of all women** have dense breasts (Categories C and D). (4)



Mammograms can miss up to **50% of cancers** in extremely dense breasts



**71% of breast cancers** occur in women with dense breasts(2)

If you have dense breasts, talk with your doctor about additional screening. Need help? See our **Patient/ Doctor Conversation Guide**.

Research shows supplemental screening beyond mammography detects more cancers in women with dense breasts. For statistics, see our **Additional Screening Options** resource. (1)

References:

- Covington, M. F. (2024). Maximizing breast cancer detection through screening: A comparative analysis of imaging-based approaches. Clinical Breast Cancer. <https://doi.org/10.1016/j.clbc.2024.09.012>
- Boyd NF, Guo H, Martin LJ, et al. Mammographic density and the risk and detection of breast cancer. N Engl J Med. 356(3):227-36, 2007
- <https://www.cancer.org/cancer/breast-cancer/understanding-a-breast-cancer-diagnosis/breast-cancer-survival-rates.htmlh>
- Sprague BL, Gangnon RE, Burt V, et al. Prevalence of mammographically dense breasts in the United States. J Natl Cancer Inst 2014; 106:dju255 [PubMed: 25217577]